

AP2 alpha Antibody (N-term)
Purified Rabbit Polyclonal Antibody (Pab)
Catalog # AP1976a

Specification

AP2 alpha Antibody (N-term) - Product Information

Application	WB,E
Primary Accession	P05549
Other Accession	P58197 , P34056 , A1A4R9 , O9N0N3
Reactivity	Human
Predicted	Bovine, Mouse, Rat, Sheep
Host	Rabbit
Clonality	Polyclonal
Isotype	Rabbit IgG
Calculated MW	48062
Antigen Region	104-133

AP2 alpha Antibody (N-term) - Additional Information

Gene ID 7020

Other Names

Transcription factor AP-2-alpha, AP2-alpha, AP-2 transcription factor, Activating enhancer-binding protein 2-alpha, Activator protein 2, AP-2, TFAP2A, AP2TF, TFAP2

Target/Specificity

This AP2 alpha antibody is generated from rabbits immunized with a KLH conjugated synthetic peptide between 104-133 amino acids from the N-terminal region of human AP2 alpha.

Dilution

WB~~1:1000

E~~Use at an assay dependent concentration.

Format

Purified polyclonal antibody supplied in PBS with 0.09% (W/V) sodium azide. This antibody is purified through a protein A column, followed by peptide affinity purification.

Storage

Maintain refrigerated at 2-8°C for up to 2 weeks. For long term storage store at -20°C in small aliquots to prevent freeze-thaw cycles.

Precautions

AP2 alpha Antibody (N-term) is for research use only and not for use in diagnostic or therapeutic procedures.

AP2 alpha Antibody (N-term) - Protein Information

Name TFAP2A

Synonyms AP2TF, TFAP2

Function Sequence-specific DNA-binding protein that interacts with inducible viral and cellular enhancer elements to regulate transcription of selected genes. AP-2 factors bind to the consensus sequence 5'-GCCNNNGGC-3' and activate genes involved in a large spectrum of important biological functions including proper eye, face, body wall, limb and neural tube development. They also suppress a number of genes including MCAM/MUC18, C/EBP alpha and MYC. AP-2-alpha is the only AP-2 protein required for early morphogenesis of the lens vesicle. Together with the CITED2 coactivator, stimulates the PITX2 P1 promoter transcription activation. Associates with chromatin to the PITX2 P1 promoter region.

Cellular Location

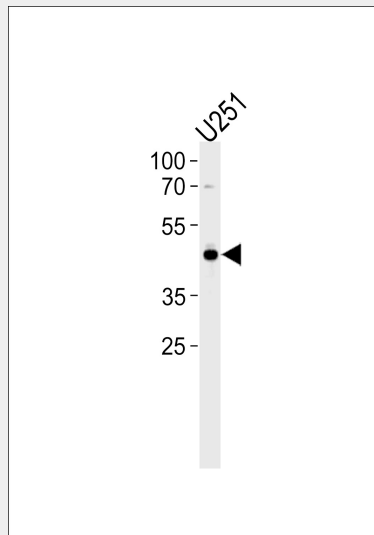
Nucleus.

AP2 alpha Antibody (N-term) - Protocols

Provided below are standard protocols that you may find useful for product applications.

- [Western Blot](#)
- [Blocking Peptides](#)
- [Dot Blot](#)
- [Immunohistochemistry](#)
- [Immunofluorescence](#)
- [Immunoprecipitation](#)
- [Flow Cytometry](#)
- [Cell Culture](#)

AP2 alpha Antibody (N-term) - Images



TFAP2A Antibody (N-term) (Cat. #AP1976a) western blot analysis in U251 cell line lysates (35ug/lane). This demonstrates the TFAP2A antibody detected the TFAP2A protein (arrow).

AP2 alpha Antibody (N-term) - Background

Sequence-specific DNA-binding protein that interacts with inducible viral and cellular enhancer elements to regulate transcription of selected genes. AP-2 factors bind to the consensus sequence 5'-GCCNNNGGC-3' and activate genes involved in a large spectrum of important biological functions

including proper eye, face, body wall, limbs and neural tube development. They also suppress a number of genes including MCAM/MUC18, C/EBP alpha and MYC. AP-2 alpha is the only AP-2 protein required for early morphogenesis of the lens vesicle.

AP2 alpha Antibody (N-term) - References

- Provenzano, M.J., *Exp. Mol. Pathol.* 83 (2), 277-282 (2007)
Tan, Y.R., *Biochem. J.* 405 (1), 131-137 (2007)
Liu, H., *EMBO Rep.* 8 (4), 394-400 (2007)
Han, S., *J. Biol. Chem.* 282 (11), 7961-7972 (2007)